

# SAP S/4HANA for **Asset Management**



## Value Drivers and Solution Enablers

### Reduce Un-Planned Downtime Or Outages

Improve asset uptime with proactive maintenance planning and scheduling. Open work orders prioritized from different dimensions such as time, urgency, geographical proximity and inter-dependencies

### Reduce Asset Service and Maintenance Costs

Enable template based data entry for describing maintenance issues. Attach photo to maintenance request using the built-in camera of mobile device

### Reduce Asset Risk

Increase reliability of assets with accurate information collection

### Reduce EH&S Penalties & Fines

Enables organization to perform maintenance activities that enhance safety, environmental, and operational results

### Reduce EH&S Management Cost

Provides safety and environmental compliance through integrated permit and work clearance features

## Maintenance Management

- ✓ Maintenance planning & scheduling
- ✓ Maintenance execution

# Valued identified for a large port with **heavy asset operations**

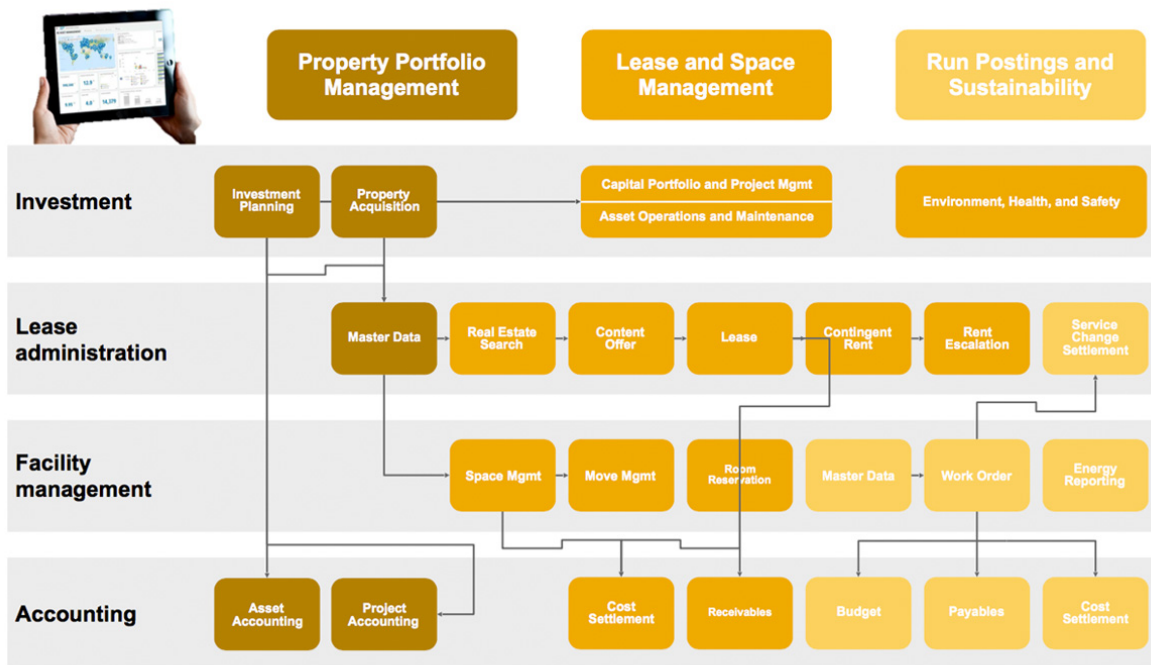
Customer is looking to optimize its assets, improve emissions, and leverage the supplier and vendors to achieve higher asset productivity

**13%** Increased asset productivity

Maintenance is streamlined and integrated with automated support for monitoring, status control, and finance accountability

**71%** Lower recordable accident frequency\*

where safety and environmental systems are fully integrated with asset management



\*Source: SAP Performance Benchmarking. Performance gap between Q1 and Average companies based on the maturity of the underlying best practice.

# Diakonie Michaelshoven plans **facilities investments** with S/4HANA



## 1 hour

lag in reporting all it took to lose governmental funding to a competitor

- ▶ Cologne-based non-profit organization
- ▶ Care for over 14,000 people at 180 facilities (100 in Cologne and 80 in Bonn) \$196m revenue; 2200 staff + 400 volunteers
- ▶ Created in 1950 as an orphanage house, it is currently a holding for five charitable societies focused on assisted living and home care, adult learning, child care, refugee housing, and fair-trade stores.



## €150M

annual reinvestment of proceeds into facilities



## 15 People

mostly from finance invested time upfront to plan S/4HANA implementation

- ▶ Detailed story

People now are more proud and interact more. We are more attractive.

**Uwe Ufer, Commercial Director**